

THE TLASE WEEKLY

FRONT PAGE NEWS FOR TEACHING, LEARNING, ASSESSMENT AND STUDENT ENGAGEMENT

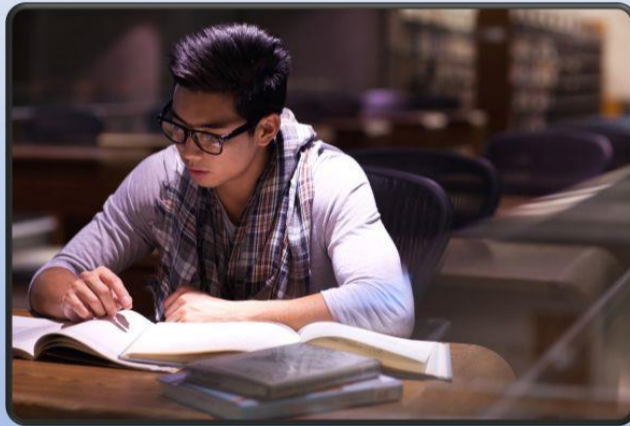
<https://tlu.cit.ie/>

<https://studentengagement.cit.ie/>

Join the Conversation Online ! National Academic Integrity Week 2023



Academic Integrity The Learner Perspective



October 16th -20th

[View Schedule](#)

Event

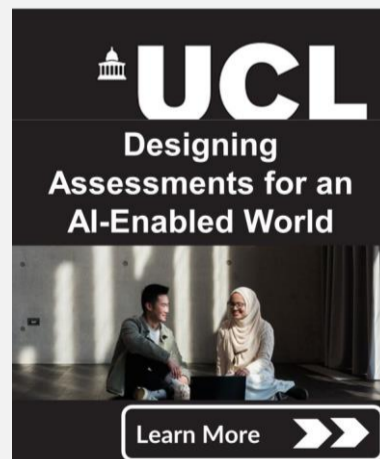
Oct 17th, 14:00 - 16:00



SATLE 2022-23:
National Seminar

[Book Now](#)

Resource



[Learn More](#)

Podcast

Understanding the factors that impact student engagement



[Listen Now](#)



Multiple Means of Engagement:
Checkpoint 7.1 Optimize individual choice and autonomy
Consider providing a choice of assessment methods within a module.

[Learn How](#)